

# Crawley Borough Council

**Report to Overview and Scrutiny Commission**  
5 September 2016

## **Safer Crawley Partnership** **Annual Review 2015-16 and Priorities for 2016-17**

Report of the Chair of the Safer Crawley Partnership, *CEx/46*

---

### **1. Purpose**

- 1.1 To inform Members of the Overview and Scrutiny Panel about the work of the Safer Crawley Partnership, with regard to performance and activity in 2015-16 and the 2016-17 priorities for the Partnership.

### **2. Recommendations**

- 2.1 To the Overview and Scrutiny Commission:

To review previous activity and to consider the future work of the Safer Crawley Partnership.

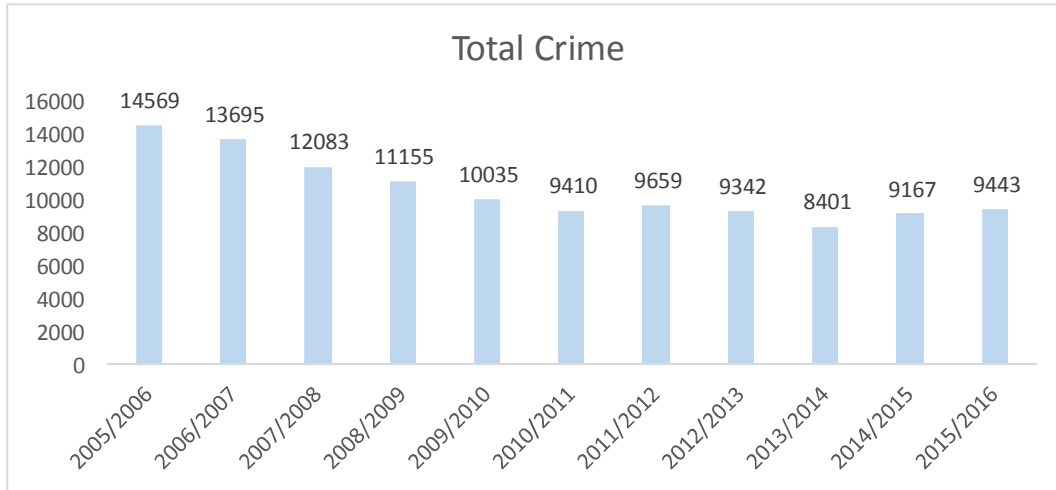
### **3. Background**

- 3.1 The Overview and Scrutiny Commission has a role in reviewing and scrutinising, on an annual basis, the decisions and actions of the Safer Crawley Partnership. This work is undertaken as part of the responsible authorities crime and disorder function.

Contact Officer:  
Lindsay Adams, Community Development Manager  
01293 438526  
lindsay.adams@crawley.gov.uk

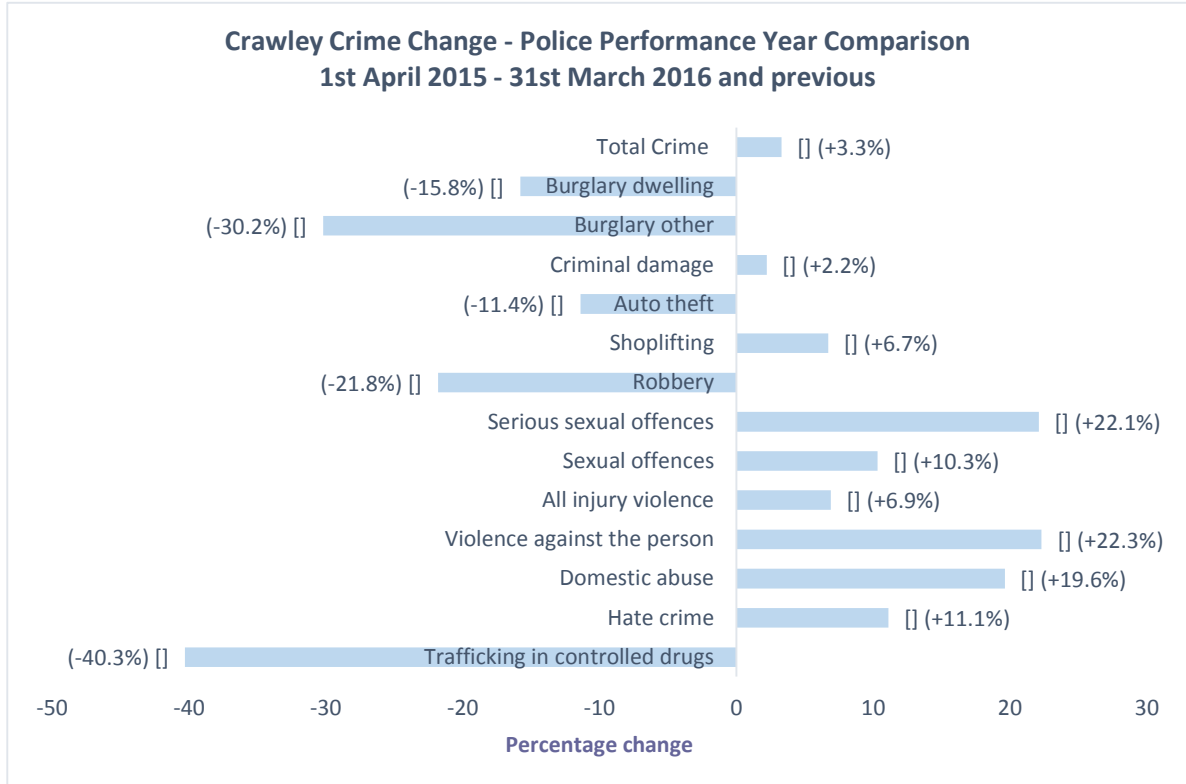
## Safer Crawley Partnership 2015-16 Annual Review

During 2015-16 total crime increased in Crawley from by 3.3% from 9,139 offences to 9,443 offences, an increase of 304 offences, less than one additional crime per day. Although there has been an increase, total crime is still on a downward trend, and well below the total number of crimes recorded back in 2005-06. The chart below shows total crime for the last 10 years.



Source: Sussex Police – Community Safety Partnership - data by crime type (total crime figure taken from the data provided in March each year)

There have been some reductions during 2015-16, as shown in the chart below. Domestic burglary reduced by 15.8% from 284 offences to 239 offences (a reduction of 45 offences). Theft of and from vehicles also reduced with 67 fewer offences, an 11.4% reduction, from 587 offences to 520 offences.



Source: Sussex Police – Community Safety Partnership - by crime type – March 2016

## Review of 2015-16 Priorities

### Priority 1 - Reducing crime particularly with regard to theft and handling of stolen goods, violent crime, criminal damage, burglaries and speeding

- Targeting of known offenders and better use of data and intelligence to identify emerging trends has resulted in a reduction of both domestic burglaries and burglaries non-dwelling.
- Work has been undertaken to target and disrupt active organised crime groups operating in the town. As a result of this activity a number of people were arrested and charged, however work continues to target these groups.
- A two week policing operation to assess the threat, harm and risk regarding the supply of Class A and Class B Controlled drugs was carried out. Over a 10 day period Crawley Neighbourhood Team executed 8 search warrants, arrested a total of 19 people, seized £90k cash, 3 motor cars and Class A and Class B Controlled Drugs with an approximate street value of £20k.

### Priority 2 - Improving the way the partnership manages and resolves joint cases of anti-social behaviour in order to improve outcomes for local people

- Joint working to tackle the issue of homelessness and begging in the town centre was undertaken to target the small number of individuals who persistently chose to beg and sleep in the town centre and refused to engage with the services on offer. A zero tolerance approach was taken before Christmas to remove any unattended belongings from shop doorways and fire exits. The clearing and securing of service yard areas has also been encouraged to deter individuals from sleeping rough. Community Protection Notice warning letters have been issued to those who have repeatedly engaged in anti-social behaviour and not engaged with support services.
- Successful joint working between the police, NASB Team and Community Wardens to deter car cruises. The police and council have continued to monitor to the situation to ensure that any further problems are dealt with swiftly.
- A Community Mental Health Social Worker funded by the Partnership was recruited to up skill the NASB Team caseworkers (and other council officers) to gain confidence in dealing more effectively with mental health and assisting people to access services. This role has had a positive impact.
- Joint working regarding the sale of New Psychoactive Substances (NPS) (so called 'legal highs') in the town centre had taken place. The consumption of NPS has both health and anti-social behaviour consequences. Targeted visits from CBC, Police and Trading Standards to identified premises was been carried out to stop to sale of these substances.

### Priority 3 - Provide better and more targeted support for vulnerable people

- Trading Standards and Sussex Police have supported vulnerable residents who have become victim to mail scams and doorstep callers. The elderly are particularly vulnerable and are at risk of losing considerable sums of money and suffering health and emotional consequences in the worst cases. In addition to providing support to residents known to have responded to a mail scam Trading Standards also delivered talks to Crawley residents to raise awareness to such scams.
- Trading Standards provided support for 24 vulnerable Crawley residents between 1 April 2015 – 12 February 2015, predominantly in respect of mail scams but also doorstep trader incidents (4 out of the 24). The loss admitted by the victims totalled in excess of £52,000. It is likely that there may well be other unreported victims who have lost far more as this is an under reported issue, work continues to raise awareness.
- Work has progressed in relation to the development of a new service model that will support individuals with complex and multiple needs. The aim of the project

is to reduce the repeat demand on partner services, improve engagement with services, improve the quality of life for these individuals and reduce the impact these individuals have on their local communities. The project will see the recruitment of a dedicated outreach worker to support a small number of individuals. This post has been jointly funded by the Partnership, Sussex Police, WSCC and the CCG. [A dedicated outreach worker has been recruited and started in post on 1<sup>st</sup> June and is currently supporting three individuals].

- The multi-agency Street Community Group have focused on the small number of individuals who have been persistently rough sleeping and begging in the town centre. A coordinated approach has been taken which has seen both support being offered and enforcement action being taken. Outreach workers from Crawley Open House and Sussex Outreach Service, have continued to offer support to these individuals many of whom have rejected help. The fire service have supported the business community to tackle the problem of individuals sleeping rough in fire exits and service yards. The council's environmental health team assisted with getting the service yards cleared to deter rough sleeping. An awareness raising event was held to let the community know that help and support is available and to promote diverted giving. There have been some really positive outcomes with a number of individuals securing accommodation at Crawley Open House or in private rented accommodation.

#### Priority 4 - Help build stronger, more resilient communities that are able to look after each other

- The council's Community Development Team have worked with and supported partners engaged in delivering projects in Broadfield, Bewbush and Langley Green as part of the Think Family Neighbourhoods Action Plan.
- Having been identified by the OSCT as a priority 2 area for Prevent, a multi-agency Prevent Partnership has been formed to respond to the needs of the community. A key focus has been improving contact with key communities to address issues to trust, and to engage them in responding to the threat of radicalisation and extremism. Noting key links with Hate Crime (as a result of community perception in relation to radicalisation and extremism, particularly given National and International incidents) and the Safeguarding of children and vulnerable adults. Several successful projects have been run including work with women to develop their knowledge of the online threat, and developing their ability to provide a counter-narrative; the delivery of the Young Leaders course, and the delivery of schools based training called Identity, Belonging and Extremism. In addition, the Prevent Coordinator, Sussex Police, and CBC Community Development continues to diversify its local contacts and to develop long standing relationships with a broad section of communities in the town. Our connection with the communities supports timely reporting, and the development of trusting relationships that should help in the identification of local vulnerabilities.

#### Priority 5 - Continue to increase confidence in policing and the criminal justice service

- The RJ (restorative justice) Service in Sussex continues to work with all victims in Sussex now being provided with information about RJ as part of their initial needs assessment as a result of the OSPCC commissioned services provided by Victim Support. RJ hubs are the visible space to facilitate delivery with close communication with criminal justice partners - especially HMP Lewes.
- Operational RJ Hubs are in place in Brighton, Bexhill and Bognor. The Bognor Hub covers the whole of West Sussex.

Priority 6 - Continue to work with people who have committed crimes encouraging them to become active members of the local community

- The partnership have provided funding to 'A Band of Brothers' to run another Quest programme. The programme lasts for 13 weeks and helps young men work out what has gone wrong in their life and start to implement change and as part of the programme each young man has a one-to-one mentor.

Priority 7 - Continue to reassure people that Crawley is a safe town

- Various crime reduction and community safety campaigns have been supported and promoted by the Partnership.

Priority 8 - Improve the intelligence and relationships that underpin the work of the partnership.

- Relationships between the council, police and other agencies are good. Work has been done on improving relations with Mental Health however this needs to continue. The relationship with Social Services is one key area that needs to be improved particularly in relation to adults.
- Data regarding the collection of drug paraphernalia by the Community Wardens has been shared with police, CRI and Public Health, so that action can be taken to tackle known 'hot spots'.
- The Partnership agreed funding to roll out a programme of free CSE awareness training to all licensed taxi/private hire drivers in Crawley, delivered by Barnardo's. The training includes how to look for the signs and dangers that children and young people may be being sexually abused or exploited and how to report any concerns.
- The Partnership funded the purchase of drug testing equipment for use by the Council's licensing team. The purpose of the project was to understand the prevalence of recreational drug use in the taxi trade and improve public safety and ensure that taxi/driver hire drivers are not putting the public at risk whilst driving under the influence of recreational drugs.

**Safer Crawley Partnership 2016-17 Strategic Assessment**

The Strategic Assessment takes into consideration the annual review of activity of the Safer Crawley Partnership (as shown above), Sussex Police and Crime Commissioner Priorities, Safer West Sussex Priorities, local stakeholder engagement and the views of the members of the Safer Crawley Partnership (from discussions in the Joint Action Group and Executive for the partnership).

Sussex Police and Crime Commissioner Priorities:

Crime & Community Safety

- Keeping Sussex a low crime area
- Commissioning new and lasting initiatives to reduce re-offending
- Taking account of community priorities and their contributing factors (such as alcohol and drugs)

Victim Focus

- Improve the experience that victims and witnesses have of the criminal justice system
- Enhance, develop and commission initiatives to bring justice for victims
- Effective policing, responsive to the needs of victims and the vulnerable

Public Confidence

- Build trust in the police and criminal justice system
- Remove proceeds of crime from criminals and reinvest that money in our communities
- Encourage the development of volunteering to make us Safer in Sussex

## Value for Money

- Improve efficiency across the criminal justice system
- Further collaboration & partnership working
- Effective and innovative commissioning of services and procurement of assets

## Safer West Sussex Partnership Priorities:-

- Child Sexual Exploitation
- Economic Crime
- Prevent
- Serious Organised Crime
- Rape & Serious Sexual Assault
- Preventing Offending
- Reducing Repeat Demand

## Feedback from the Stakeholder Event held on 22 February 2016

Representatives from statutory partners and local community/voluntary groups attended a stakeholder event on 22 February 2016. The purpose of the event was to find out if the current priorities were the right priorities for Crawley, what impacted on people's perception of crime and what crime and community safety issues of most concern were.

The main issues highlighted were around the need to better communicate the work of the partnership and key messages such as awareness raising on hate crime, scams, child sexual exploitation and cyber-crime. Overall it was felt that the partnership was tackling the right issues, however it was noted that the partnership needed to be specific with regard which 'vulnerable people' they were focusing on. Also key was getting the balance right in terms of providing information on what the issues and risks are so that people are informed in order to best protect themselves but not to increase people's fear of crime.

Specific issues that should be focused on over the next 12 months included hate crime, tackling anti-social behaviour, addressing homelessness particularly in the town centre, identifying and supporting vulnerable people, child sexual exploitation, disrupting organised crime, scam awareness and cybercrime.

## Emerging issues

Members of the Joint Action Group and Safer Crawley Partnership Executive identified the following priorities or emerging issues (in no particular order of priority):-

- Supporting female offenders to improve engagement with services and reduce offending and the impact on the family. The data provided by KSS CRC indicated an increase in the number of female offenders.
- Improve communication and reduce delays in customers accessing mental health services particularly in relation to cases where there is ongoing nuisance and anti-social behaviour and where behaviour is impacting on the community and homes are at risk.
- Improve the help and services to people with complex and multiple needs who are involved in crime/anti-social behaviour and nuisance and/or pose a risk to self and/or others. This links to the pilot project led by the CCG which the Safer Crawley Partnership are part funding which will provide a dedicated outreach worker to support individuals with mental health issues and alcohol/substance misuse and are not engaging or have poor engagement with services.
- Continue to work together to agree, implement and review strategies for dealing with homelessness and begging in town centre, use of alcohol by members of street community in public places and the sale of legal highs. Despite some successes there has been a resistance from some rough sleepers to accept help and support from local services, this had resulted in a very visible presence of rough sleepers particularly in the town centre.

- Given the diverse demographic of Crawley, Female Genital Mutilation (FGM) and Honour Based Violence (HBV) may need to be issues that the partnership should consider focusing on. FGM is prevalent in Africa, the Middle East and Asia. Females living in Crawley who originate from countries that practice FGM are at greater risk. More work needs to be done to fully understand the level of risk in Crawley.
- Continue to raise awareness, disseminate warning messages and to identify actual and potential victims of mass marketing fraud and doorstep criminals.
- Crawley has been identified as a pilot area for a multi-agency Serious and Organised Crime (SOC) approach by the joint Sussex and Surrey Police and Crime Commissioners SOC Steering Group due to an active presence of organised crime groups operating in Crawley.
- Crawley has been highlighted as one of the areas in West Sussex where there is a higher risk of Child Sexual Exploitation. Awareness raising within key hotspot areas and with identified groups needs to be carried out. This has already started with all licensed taxi and private hire drivers due to receive CSE awareness training.
- Legislation is in place to allow Mandatory Drug testing to take place in custody for suspects who have been arrested. Targeted drug testing for suspects would allow early referral to drug rehabilitation service. A failure to attend this rehabilitation appointment is a criminal offence. Targeted drug testing of suspects for shoplifting, burglary, drug, night time economy violence offences and domestic violence would allow an opportunity to understand drug use across Crawley and its part in offending as well as allowing a real opportunity to allow suspects to start drug rehabilitation as soon as possible. Brighton and Hove Police currently use this scheme and it has had a positive impact on drug related crime and improved the understanding of the impact of drugs on the city regarding crime.
- In relation to Prevent, and protecting vulnerable individuals: to monitor community tensions in the lead up to the likely release of Op Crevice offenders and to ensure there is an effective partnership response in place to minimise potential negative impact in the community.

### **Safer Crawley Partnership purpose and priorities for 2016-17**

Based on the information contained in the Strategic Assessment the Executive agreed the purpose of the Safer Crawley Partnership should be:-

*To tackle crime and disorder, anti-social behaviour, alcohol and substance misuse and any other behaviour which has a negative effect on the local community and reduce re-offending so that people in Crawley are safer and feel safer.*

They also agreed that the priorities for the Partnership for 2016/17 would be:-

1. Serious and Organised Crime
2. Street Community (this includes homelessness, begging and street drinking)
3. Protecting vulnerable individuals (this includes victims of hate crime and scams/fraud, those at risk of FGM, HBV, CSE or radicalisation or extremism and those with complex and multiple needs)

Work has already begun with the wider partnership to respond to the priorities and progress is considered by the Safer Crawley Partnership Executive on a quarterly basis.